

Fabrics & Finishings 2022

Standard Collection



SELECT
61186 (3)



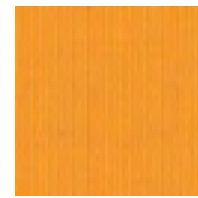
VELVET
Winered 39 (2)



NEXT
NX-7 (1)



LEATHER
PREMIUM
2875 (5)



NEXT
NX-1 (1)



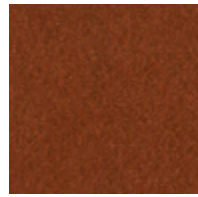
VALENCIA
107-2116 (2)



CURA
62083 (2)



STEP
62057 (3)



VELVET
Copper 126 (2)



LEATHER
PREMIUM
2845 (5)



LEATHER
PREMIUM
2840 (5)



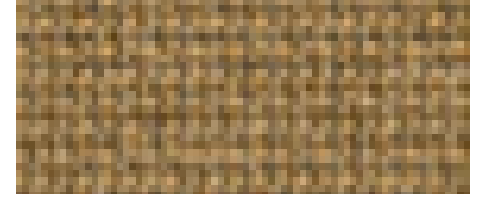
VALENCIA
107-0002 (2)



LEATHER
PREMIUM
2180 (5)



LEATHER
S-21 (4)



SOFTLINE
SL-21 (4)



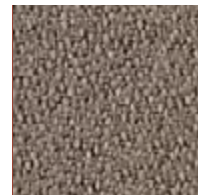
VELVET
Ocre 23 (2)



XTREME
YS136 (2)



STEP
63075 (3)



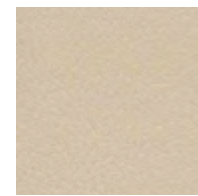
EVO
EV-2 (1)



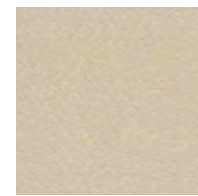
VALENCIA
107-0034 (2)



LEATHER
S-10 (4)



SOFTLINE
SL-10 (2)



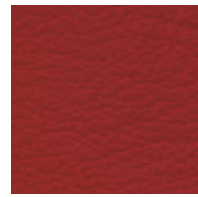
SOFTLINE
SL-28 (2)



LEATHER
S-28 (4)



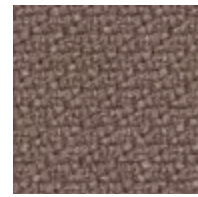
SELECT
62097 (3)



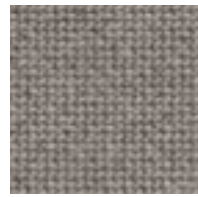
LEATHER
S-19 (4)



SOFTLINE
SL-19 (2)



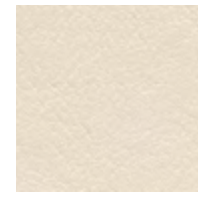
STEP
60090 (3)



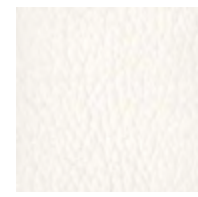
CURA
61168 (2)



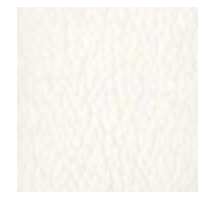
OCEANIC
OOC13 (3)



SYNERGY
LDS08 (3)



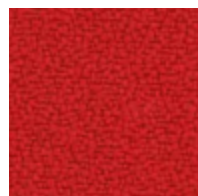
SYNERGY
LDS16 (3)



RHYTHM
Rhythm 60165



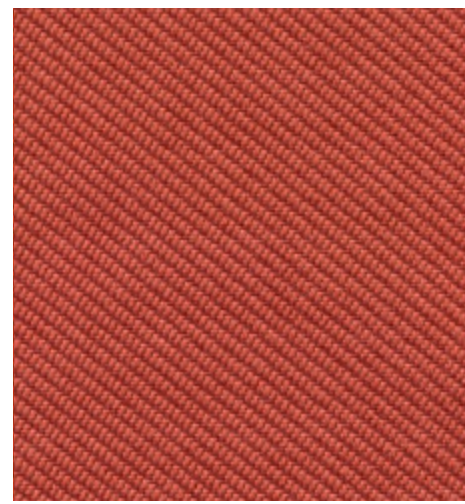
VALENCIA
107-4045 (2)



XTREME
YS079 (2)



SPRINT
PS010 (2)



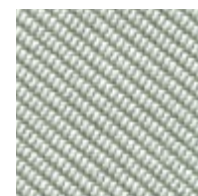
OCEANIC
OOC12 (3)



XTREME
YS094 (2)



NEXT
NX-10 (1)



STEP
60091 (3)



RHYTHM
Rhythm 60165



VALENCIA
107-4045 (2)



RHYTHM
Rhythm 63067



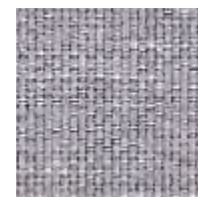
EVO
EV-5 (1)



SYNERGY
LDS73 (3)



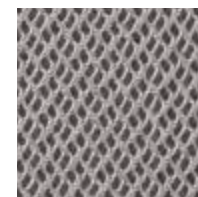
CURA
60110 (2)



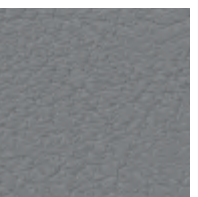
NEXT
NX-10 (1)



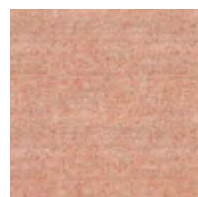
STEP
60091 (3)



RHYTHM
Rhythm 60165



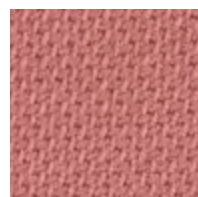
VALENCIA
107-4045 (2)



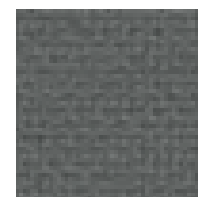
SYNERGY
LDS74 (3)



OCEANIC
OOC16 (3)



SELECT
65117 (3)



CURA
60110 (2)



SPRINT
PS028 (2)

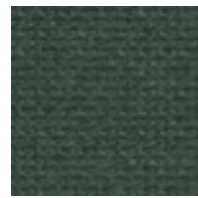
Price Group
① ② ③ ④ ⑤



STEP 68161 (3)



VELVET Emerald 184 (2)



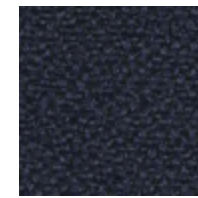
CURA 68182 (2)



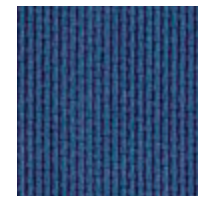
SYNERGY LDS49 (3)



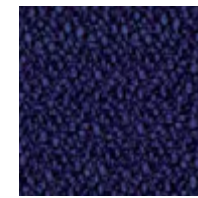
VELVET Navy 49 (2)



XTREME YS026 (2)



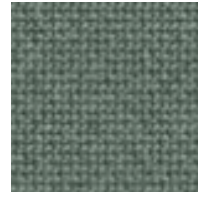
NEXT NX-15 (1)



EVO EV-10 (1)



VELVET Eucalyptus 193 (2)



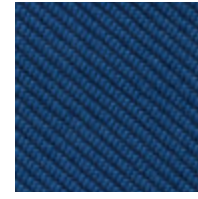
CURA 68186 (2)



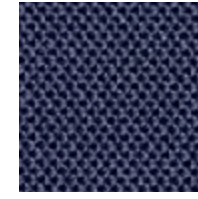
XTREME YS047 (2)



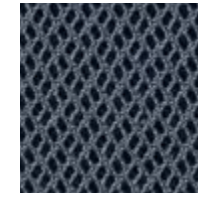
NEXT NX-11 (1)



OCEANIC OOC06 (3)



SPRINT PS033 (2)



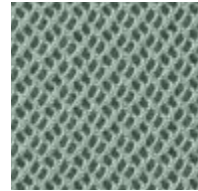
RHYTHM Rhythm 66152



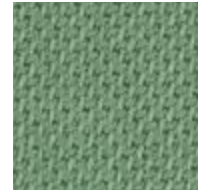
SYNERGY LDS62 (3)



XTREME YS096 (2)



RHYTHM Rhythm 68121



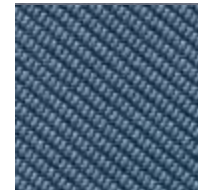
SELECT 68210 (3)



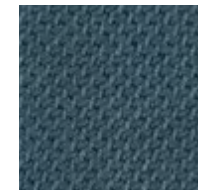
OCEANIC OOC04 (3)



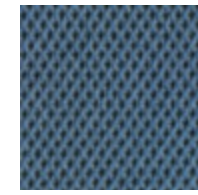
CURA 66170 (2)



OCEANIC OOC11 (3)



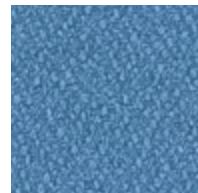
SELECT 67097 (3)



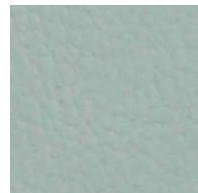
SPRINT PS040 (2)



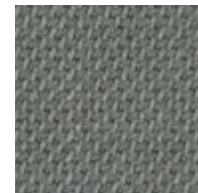
VELVET Lavender 71 (2)



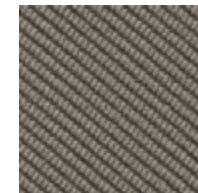
EVO EV-25 (1)



VALENCIA 107-2107 (2)



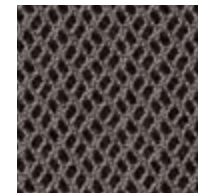
SELECT 60132 (3)



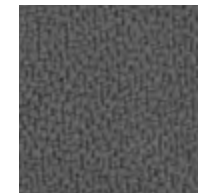
OCEANIC OOC08 (3)



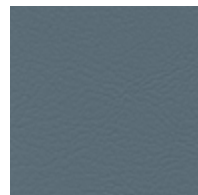
EVO EV-14 (1)



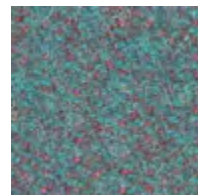
RHYTHM Rhythm 60176



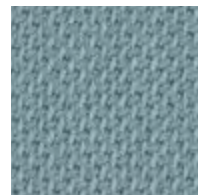
XTREME YS081 (2)



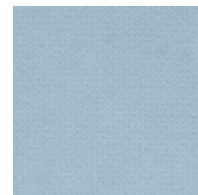
VALENCIA 107-4042 (2)



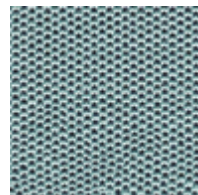
SYNERGY LDS56 (3)



SELECT 67098 (3)



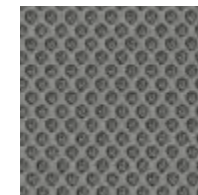
STEP 67004 (3)



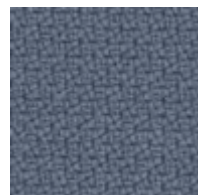
SPRINT PS039 (2)



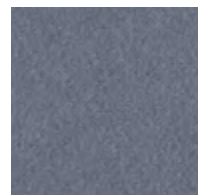
LEATHER PREMIUM 2760 (5)



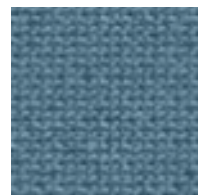
RUNNER Runner 60011



STEP 66152 (3)



VELVET Niagara 158 (2)



CURA 66167 (2)



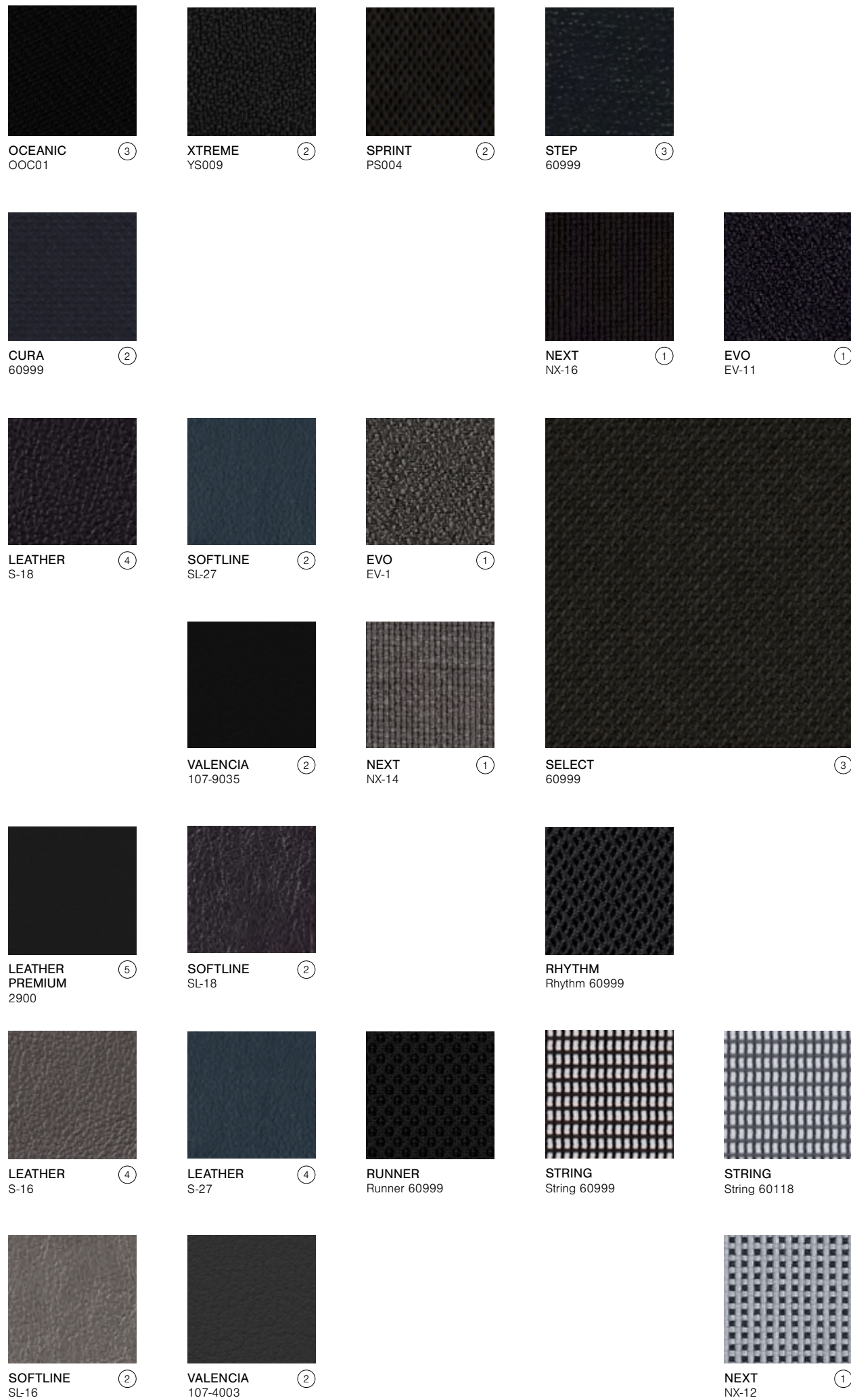
SPRINT PS030 (2)



SYNERGY LDS17 (3)

Standard Collection

Technical Specifications



	Evo	Next	Cura	Softline	Sprint	Valencia	Velvet	Xtreme	Oceanic	Select	Step	Synergy	Rhythm	Runner	String	Leather	Leather Premium
COMPOSITION (%)																	
Wool	-	-	-	-	-	-	-	-	-	85	-	95	-	-	-	-	-
Polyurethane	-	-	-	100 ¹	-	-	-	-	-	-	-	-	-	-	-	-	-
Polyamide	-	-	-	-	-	-	-	-	-	15	-	5	-	-	-	-	-
Polyester	100	100	2	-	100	-	100 ¹ 90 ²	-	-	-	-	-	100	80	100	-	-
Polyester HI-Loft™	-	-	-	-	-	100 ²	-	-	-	-	-	-	-	-	-	-	-
Post-consumer recycled Polyester	-	-	98	-	-	-	-	100	100	-	-	-	-	20	-	-	-
Recycled Polyester	-	-	-	-	-	-	-	-	-	-	-	-	-	-	-	-	-
Trevira CS	-	-	-	-	-	-	-	-	-	-	100	-	-	-	-	-	-
Vinyl	-	-	-	-	-	100 ¹	-	-	-	-	-	-	-	-	-	-	-
Cotton	-	-	-	100 ²	-	-	10 ²	-	-	-	-	-	-	-	-	-	-
Leather	-	-	-	-	-	-	-	-	-	-	-	-	-	-	100	100	
ENVIRONMENTAL FACTS																	
EU Ecolabel	•	-	•	-	-	-	-	•	•	•	•	•	-	•	-	-	-
Oeko-Tex® Standard 100	•	•	•	-	-	-	-	•	•	•	•	-	•	•	•	-	-
Cradle to Cradle	-	-	-	-	-	-	-	-	-	-	-	-	-	•	-	-	-
100% free of heavy metals	-	-	-	-	-	-	-	-	-	-	•	-	-	-	-	-	-
Indoor Advantage Gold	-	-	-	-	•	-	-	•	-	-	-	•	-	-	-	-	-
FLAMMABILITY																	
BS EN 1021 – Cig. & Match	•	•	•	-	•	•	-	•	•	•	•	•	•	•	•	•	•
BS EN 1021-1 – Cigarette	-	-	-	•	-	-	-	-	-	-	-	-	-	-	-	-	-
BS 7176 Low Hazard	-	-	-	-	•	-	-	•	•	-	-	•	-	-	-	-	-
BS 7176 Medium Hazard	-	-	-	-	-	-	-	•	•	-	•	-	•	-	-	-	-
BS 5852 Part 1 0 Cigarette	-	-	-	-	-	-	•	-	-	-	-	-	-	-	-	-	-
BS 5852 Part 1 0,1 Cig. & Match	-	-	-	-	-	-	-	-	-	•	-	-	-	-	-	-	-
BS 5852 Crib 5	-	-	-	-	-	-	-	•	-	•	•	-	•	-	-	-	-
DIN 4102 B1	-	-	-	-	-	-	-	•	-	-	•	-	•	-	-	-	-
DIN 4102 B2	-	-	-	-	-	-	-	-	-	-	-	-	-	-	-	-	-
UNI 9175 (Class 1IM)	-	-	-	-	•	-	-	•	-	-	•	•	-	•	-	-	-
Önorm B1/Q1	-	-	-	-	-	-	-	-	-	-	•	-	-	-	-	-	-
NF D 60-013	-	-	-	-	-	-	-	•	-	-	-	-	-	-	-	-	-
NF P 92-503/M2	-	-	-	-	-	•	-	-	-	-	-	-	-	-	-	-	-
CA TB 117-2013	-	-	•	-	-	-	-	-	•	•	•	-	•	•	•	-	-
IMO A.652 (16)	-	-	-	-	-	-	-	-	-	-	-	-	-	-	-	-	-
IMO MSC 307 (88) Annex 1 part 8	-	-	-	-	-	-	-	-	-	•	-	-	-	-	-	-	-
ASTM E 84 Class I	-	-	•	-	-	-	-	-	•	-	-	-	-	-	-	-	-
FASTNESS TO RUBBING																	
Dry	4-5	-	4-5	-	4	-	-	4	-	4-5	4-5	4	4-5	4-5	4-5	4-5	>4
Wet	4-5	-	4-5	-	4	-	-	4	-	4-5	4-5	4	4-5	4-5	4-5	4-5	>4
OTHER																	
Weight (g/m²)	320	340	300	220	325	650	305	310	497	365	336	400	328	320	220	-	-
Width (cm)	140	140	140	140	150	140	140	140	140	140	140	140	160	160	150	-	-
Thickness	-	-	-	-	-	-	-	-	-	-	-	-	-	-	-	0.8-1.0 mm (+/-15%)	1.0-1.2 mm
Abrasion (Martindale)	180000	100000	100000	≥50000	170000	>300000	>100000	100000	100000	200000	100000	100000	70000	70000	70000	-	-
Pilling (EN ISO 12945-2)	5	4-5	4-5	-	4	-	4-5	5	4	4	4-5	4	5	5	4-5	-	-
Light fastness (EN ISO 105-B02)	4-5	4-5	5-8	-	5	>5	4-5	6	5	5-8	5-7	5	5-7	5-7	5-7	5	5
PZH Hygienic Certificate	•	•	-	•	5	•	-	-	-	-	-	-	-	-	-	-	-
Bacterial resistance (AATCC 147)	-	-	-	-	-	•	-	-	-	-	-	-	-	-	-	-	-
Mildew resistance (ASTM G21-02)	-	-	-	-	-	•	-	-	-	-	-	-	-	-	-	-	-
Urine resistance	-	-	-	-	-	•	-	-	-	-	-	-	-	-	-	-	-
Antistatic (ASTM D-257)	-	-	-	-	-	•	-	-	-	-	-	-	-	-	-	-	-
Acoustic test air flow resistance EN 29053 & ISO 9053-1	-	-	•	-	-	-	-	-	-	-	-	-	-	-	-	-	-

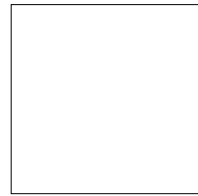
1 surface

2 basic material

More information about maintenance can be found at www.profim.eu

Plastics

Ariz



White
CODE 20



Ashen
CODE 517



Black
CODE 01



Navy
CODE 516



Gray Blue
CODE 503



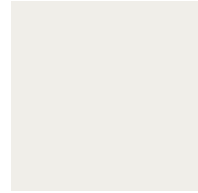
Olive green
CODE 513



Red
CODE 3020

Plastics, Frames

Zoo



Light Grey
NCS S 2500-N



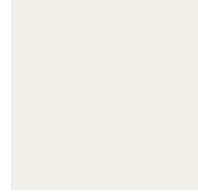
Grey
NCS S 6500-N



Black
RAL 9005

Frames

Nine, Seven



White
RAL 9016*



Grey
RAL 7005*



Black
RAL 9005



Turquoise
RAL 6034



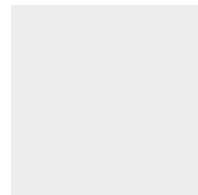
Beige-green
RAL 1000



Orange
RAL 2012

Plastics

Accis^{Pro}, Ellie^{Pro}, Trillo^{Pro}*,
LightUp, Violle



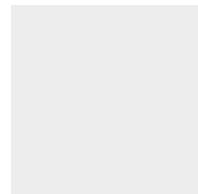
Light grey
RAL 7047



Black
RAL 9005

Plastics

Mickey



Light grey
RAL 7047



Beige
RAL 7036



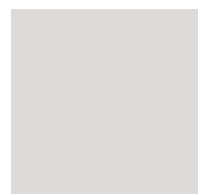
Grey
RAL 7043

Table tops*, Frames*

Chic, Chic Air, Chic
Lounge, Chic Tables

Frames**

Chic, Chic Air, Chic
Lounge, Chic Tables,
Ellie^{Pro}, Fan, Nu



White
EPO1*



Grey
EPO2*



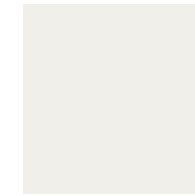
Graphite
EPO3*



Gold
EPO6**

Aluminium elements

Accis^{Pro}, Violle



White
RAL 9016



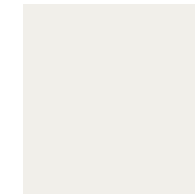
Graphite



Polished

Aluminium elements

Ellie^{Pro}, Trillo^{Pro}



White
RAL 9016



Graphite



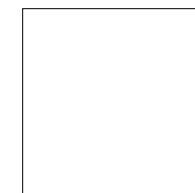
Polished



Black
RAL 9005

HPL

Com, MyTurn Sofa,
SoftBox, Tables SH/SR,
Wall In, Zoo



White
LW01



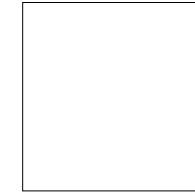
Grey
LW04



Black
LW02

Tempered Glass

Chic Tables



White
G1



Beige
G3, RAL 7044



Graphite
G4, RAL 7042



Black
G2

Wood (beech)

Chic, Chic Air, Com, Ellie^{Pro},
Fan, Nu, October,
SoftBox, Tables SW,
Nine



H13
for Fan and Nine only



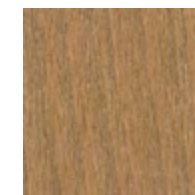
H8



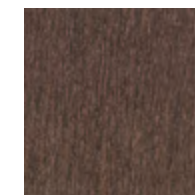
H6



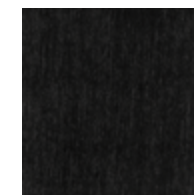
H7



H12



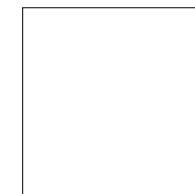
H11



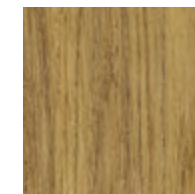
H5

Wood (oak)

Fan, Tables SW



H13



HO6



HO12



HO11

Natural modified
veneers

Chic Tables, Com, MyTurn
Sofa, Softbox



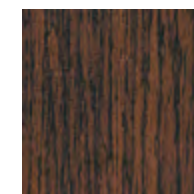
HM10



HM11



HM12



HM20